

Expanding WaterStop



Description

Izolet WaterStop is an expanding waterstop that consists of natural sodium bentonite and butyl rubber polymers. It is a flexible and self-adhering material which expands colloiddally on contact with water and applicable to all construction joints.

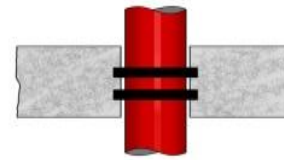
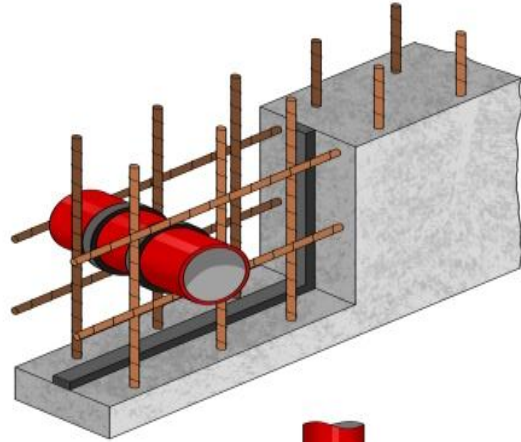


Uses

Construction joints, precast elements, water tanks, waste water treatment plants, tunnels, basements, manholes, culverts, reservoirs, swimming pools, canals, etc.

Features and Benefits

- Easy to install
- Needs no special handling
- Flexible
- Self-adhering
- Non-toxic
- Not contain bitumen, tar, asbestos, etc.
- Excellent adhesion



TYPICAL PHYSICAL PROPERTIES

Adhesion to Clean Dry Concrete	Excellent
Elongation	Up to 300%
Expansion	Up to 300%
Specific Gravity	1.50 gr/cm3 ASTM D71
Volatile Material	0.1% ASTM D6
Resistance against Hydrostatic Pressure	Up to 80 m. water column (8 bars)
Installation temperatures	-15 °C to 60 °C
Operating temperatures	-45 °C to 120 °C
Surface Preperation	Surface should be clean and dry
Colors	Black, Blue, all colors are available
Storage	Dry storage, direct sunlight and moisture should be prevented

Packaging & Sizes

- 25 mm. x 20 mm.
- 25 mm. x 10 mm.
- 25 mm. x 5 mm.
- 18 mm. x 6 mm.

* Custom products are available